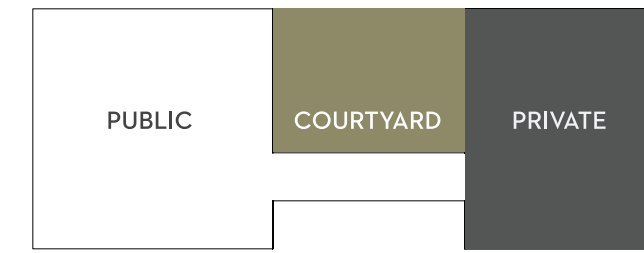
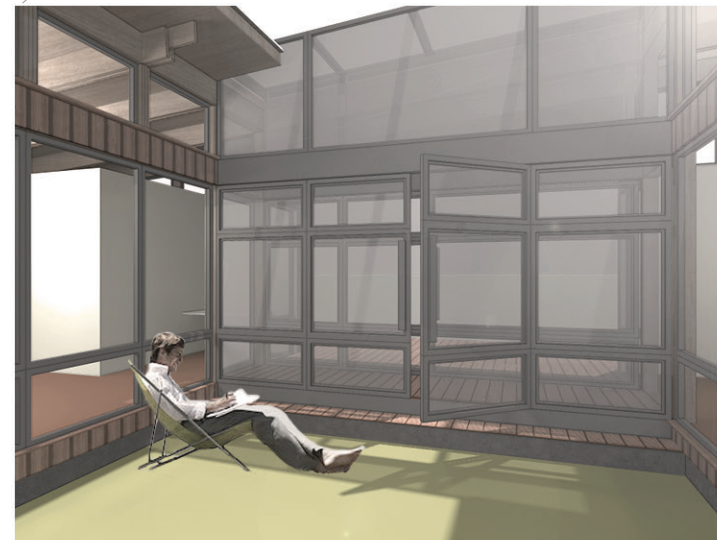
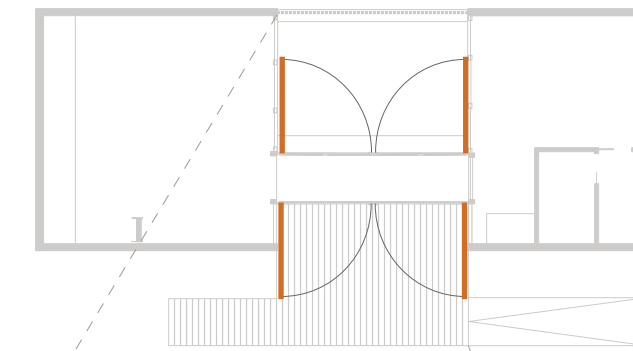
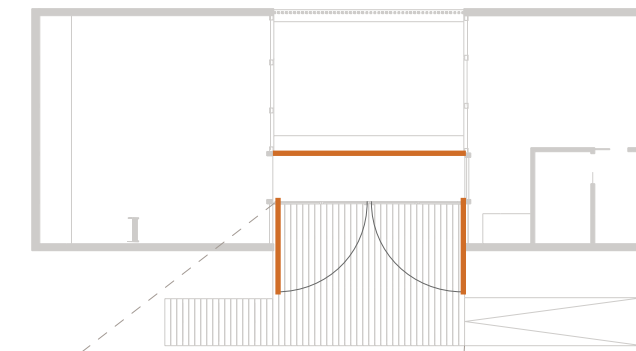
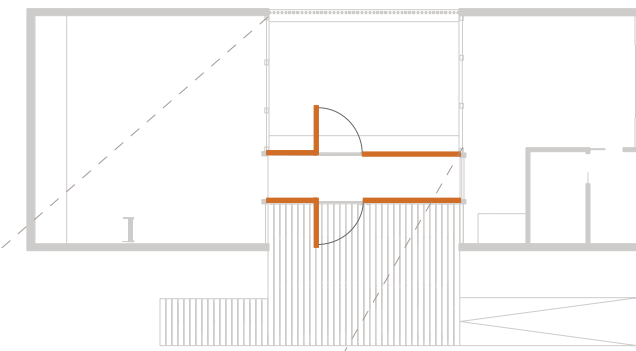


REPOSE HOUSE

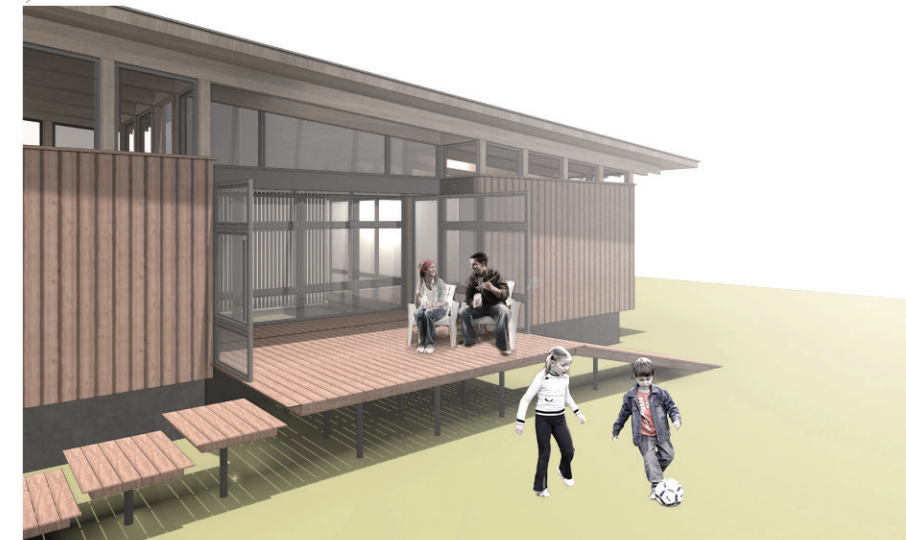
The **Repose House** is at its simplest a three room dwelling with distinct zones for public and private activities. The private space is separated from the public and is connected by a translucent passageway which serves as the main circulation point for the house. The porch reaches out into the sun-filled yard to the south, continuing the southern vernacular tradition of porches. The courtyard and porch spaces are designed to serve those living in the home as a place for **rejuvenation, relaxation and recreation**. The public and private spaces face into the courtyard which serves to bring the outside into this dwelling. Natural light pours into the spaces through a clerestory and operable awning windows allow for breezes and natural ventilation of the home. The organization and transformational functions of this small dwelling allow the house to become a rich place to find **repose** from the common busyness of life.



SPATIAL ORGANIZATION CONCEPT



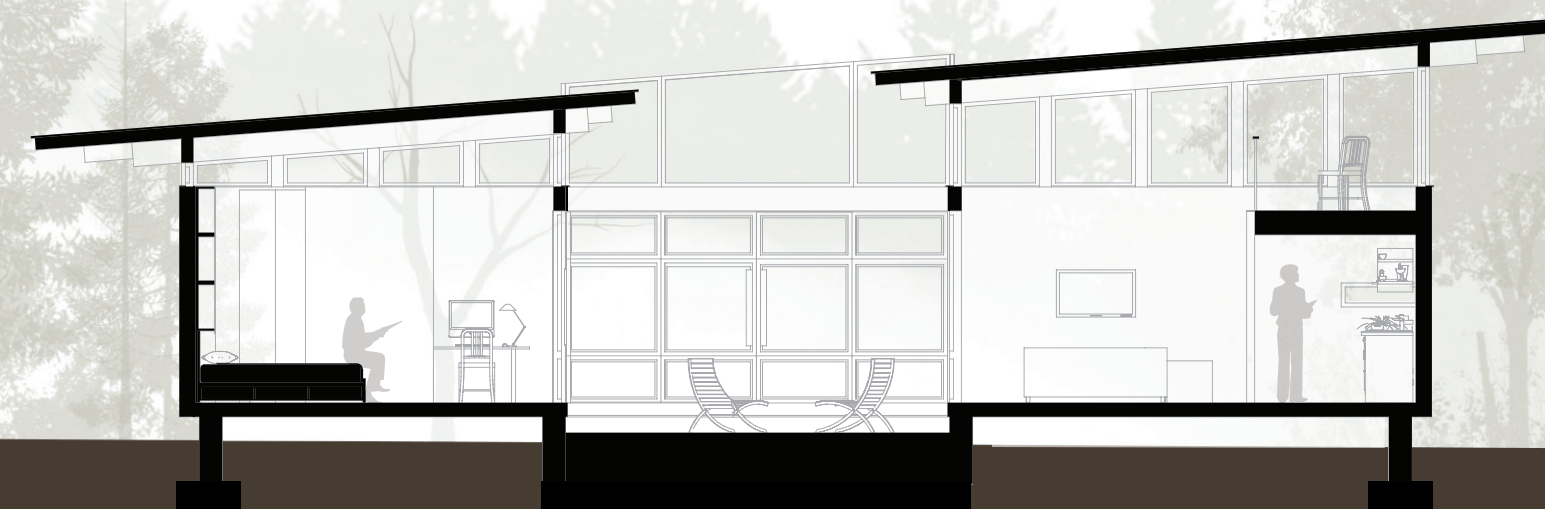
REJUVENATION



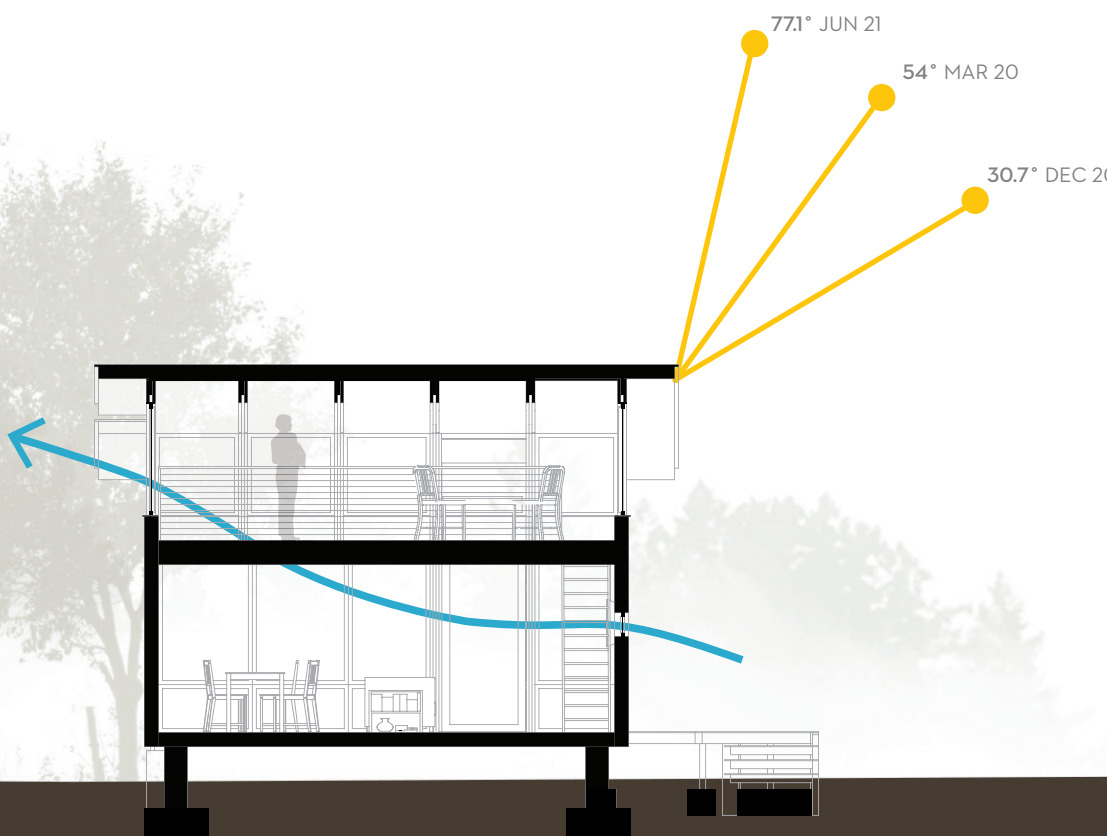
RELAXATION



RECREATION



TRANSVERSE SECTION 1/8" = 1'



TRANSVERSE SECTION 1/8" = 1'

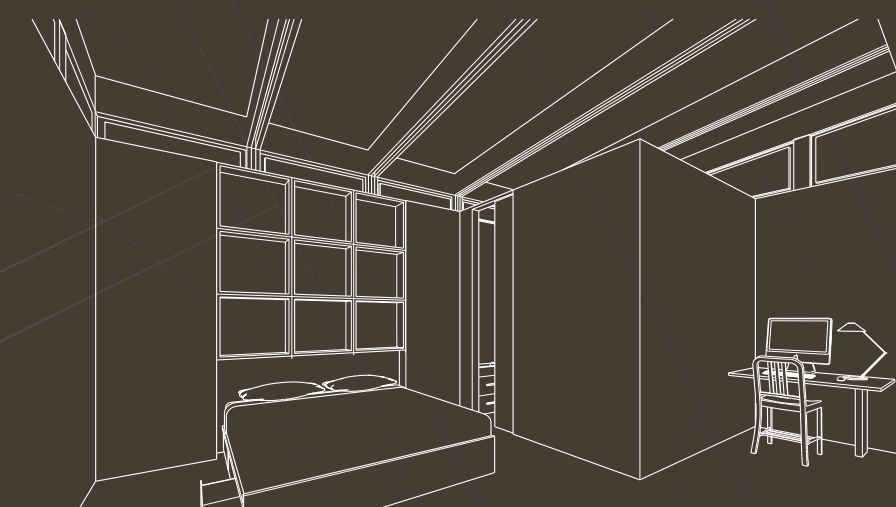
STANDING SEAM METAL ROOF
SIPS PANELS 6"
FINISH BOARD 1/2"
SOFFIT 1/2"
BUILT UP BEAM 2 X 6" (3X)
BUILT UP COLUMN 2 X 6" (3X)
CLERESTORY

METAL FLASHING (CONTINUOUS)
TOP PLATE
SIPS PANELS 7"

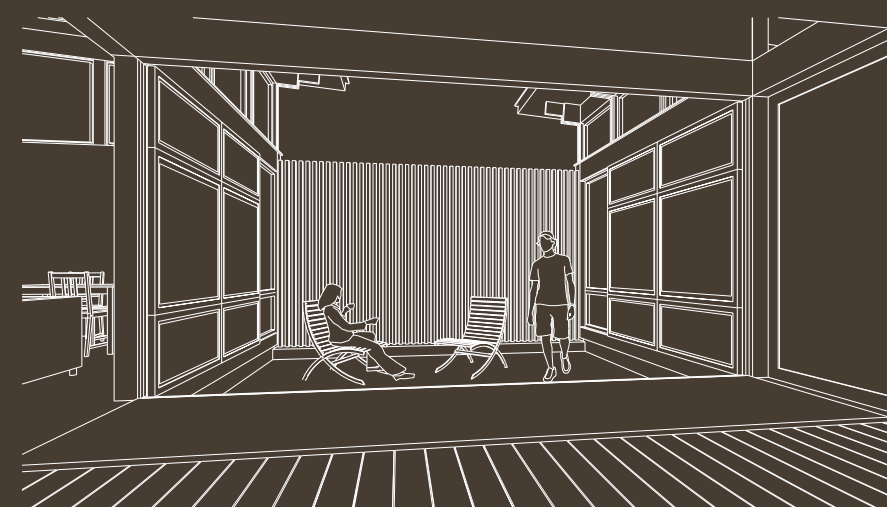
BATTEN 1/2 X 2"
BOARD IPE SIDING 1/2 X 4"
VAPOR BARRIER
GYPSUM BOARD 5/8"

SOLE PLATE 2 X 6"
WOOD FLOORING 1/2 X 4"
SIPS PANELS 7"
SOFFIT PT.S.Y.P. 1/2"
METAL FLASHING
SILL PLATE (ANCHORED TO FOUNDATION)
CONCRETE FOUNDATION

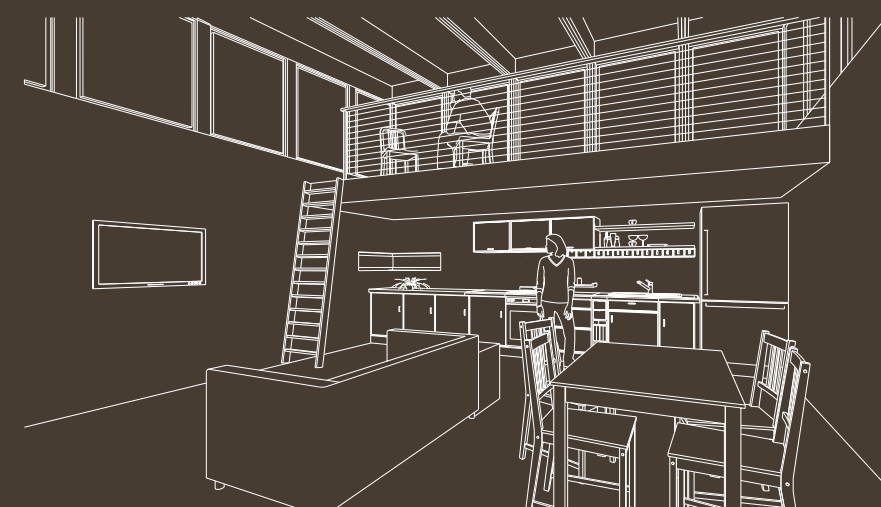
WALL SECTION 3/4" = 1'



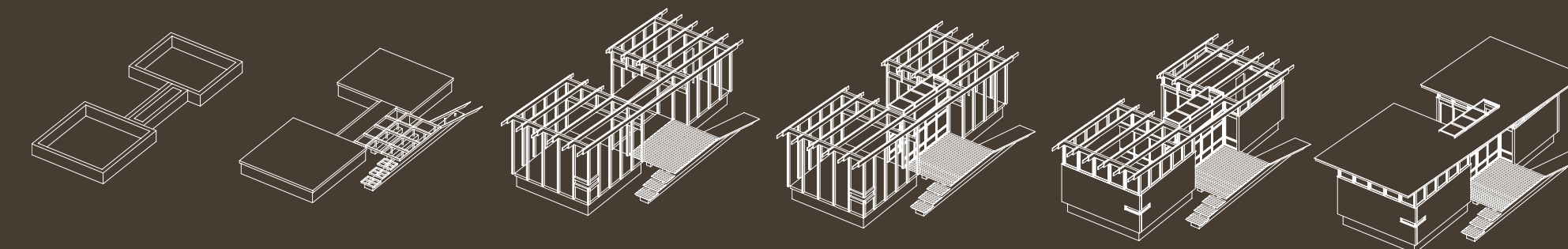
BEDROOM AND BATHROOM



COURTYARD FROM ENTRY PORCH



LIVING ROOM AND KITCHEN



CONSTRUCTION SEQUENCE